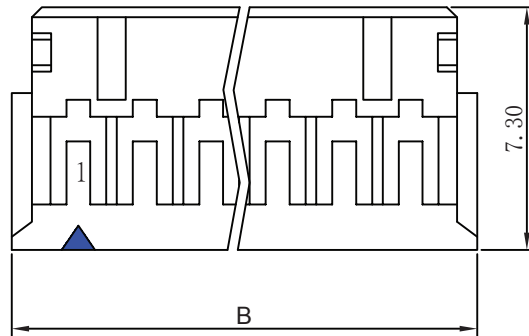
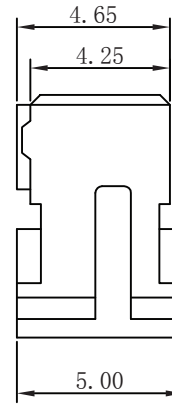
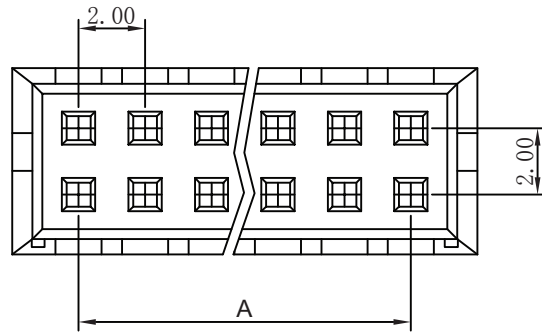


RoHS



Poles	Dimensions(MM)	
	A	B
2*2P	2.00	5.90
2*3P	4.00	7.90
2*4P	6.00	9.90
2*5P	8.00	11.90
2*6P	10.00	13.90
2*7P	12.00	15.90
2*8P	14.00	17.90
2*9P	16.00	19.90
2*10P	18.00	21.90
2*11P	20.00	23.90
2*12P	22.00	25.90
2*13P	24.00	27.90
2*14P	26.00	29.90
2*15P	28.00	31.90
2*16P	30.00	33.90
2*17P	32.00	35.90
2*20P	38.00	41.90

SPECIFICATIONS

Current Rating: 2A AC, DC
 Voltage Rating: 250V AC/ max.
 Temperature range: -40 C ~ +85 C
 Contact resistance: 20m max
 Insulation Resistance: 1000M / min.
 Withstanding Voltage: 800V AC/ minute
 Material: Nylon 66, UL94V-0