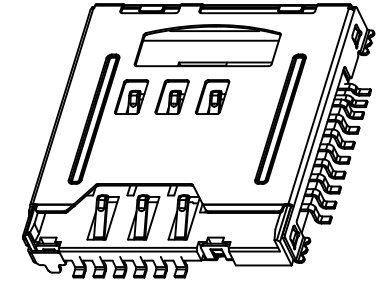
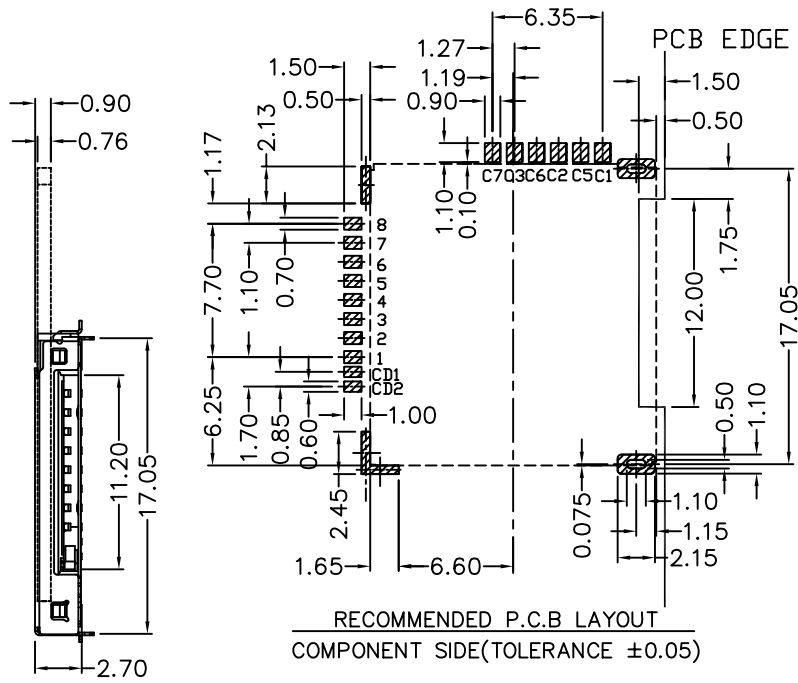
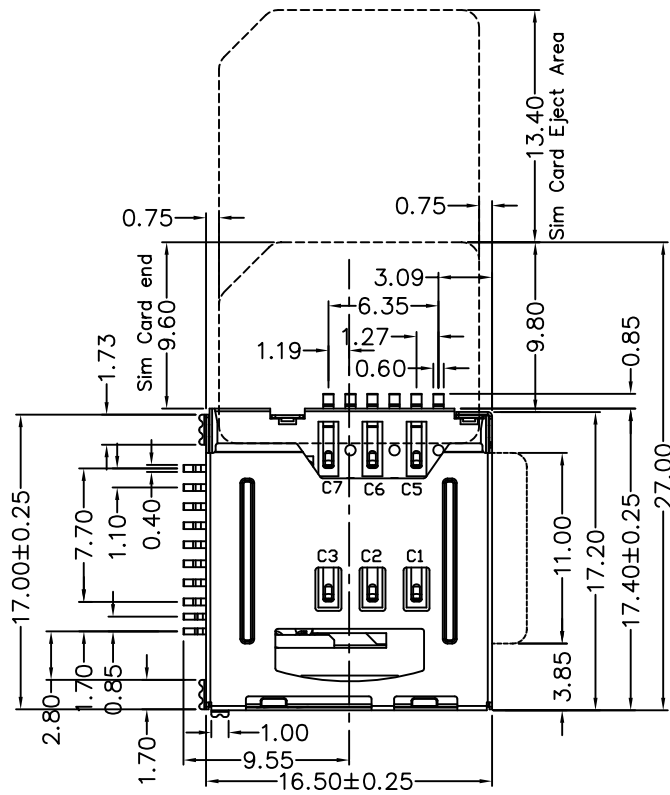
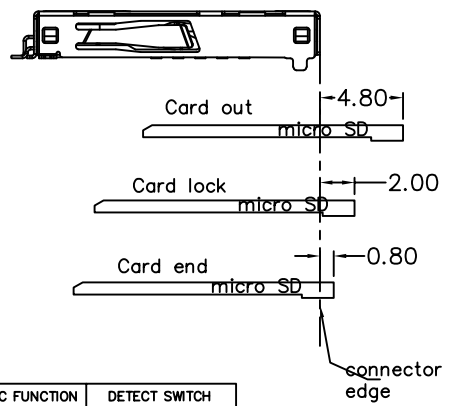


REV.	DESCRIPTION OF REVISIONS	APPR.	DRAW.	RELEASE	DATE
X1					
X2					

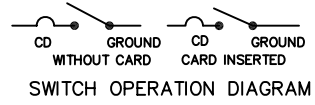


Micro SD CARD		SIM CARD	
Pin No.	NAME	Pin No.	NAME
1	DAT2	C1	VCC
2	CD/DAT3	C2	RST
3	CMD	C3	CLK
4	VDD	C5	GND
5	CLK	C6	VPP
6	VSS	C7	I/O
7	DAT0		
8	DAT1		
CD1	SW		
CD2	SW		

RECOMMENDED P.C.B LAYOUT
COMPONENT SIDE(TOLERANCE ±0.05)



ELECTRIC FUNCTION	DETECT SWITCH
WITHOUT CARD	OPEN
CARD INSERTED	CLOSED



TECHNICAL CHARACTERISTICS

- General Characteristics**
 Dimensions: 17.40X16.50X2.70H mm
 Weight: Approx 1.00±0.2g
 Durability: 5,000 cycles min.
- Electrical Characteristics**
 Contact resistance: 50mΩ typical, 100mΩ max
 Insulation resistance: >1000MΩ/500V DC
- Solderability**
 Vapor phase: 215°C, 30sec. Max
 IR reflow: 250°C, 5sec. Max
 Manual soldering: 370°C, 3sec. Max
- Environmental Characteristics**
 Operating temperature: -40°C~+85°C
 Operating humidity: 10%~+95%RH

ITEM	PART NAME	Q'TY	MATERIAL	FINISH
1	HOUSING	1	Hi-temp Thermoplastic	Black UL94V-0
2	SLIDER	1	Hi-temp Thermoplastic	Black UL94V-0
3	MicroSD TERMINAL	10	Copper Alloy	Contact area: Gold plated
4	SIM TERMINAL	6	Copper Alloy	Contact area: Gold plated
5	TOP SHELL	1	Stainless steel	SMT area: Gold plated
6	BOTTOM SHELL	1	Stainless steel	
7	COIL SPRING	1	SWP	
8	LOCK SPRING	1	Stainless steel	
9	CRANK-AXLE	1	Stainless steel	

Unless otherwise specified, other tolerance are:

Satron Electronics Ltd.

X ±0.35	X' ±5'	NAME: 2 in 1 Card Connector	
X.X ±0.25	X.X' ±4'	MODEL NO: SN-M718	
X.XX ±0.15	X.XX' ±3'	TYPE: SIM6pin+ MicroSD8pin H=2.70mm	
X.XXX ±0.10	X.XXX' ±2'		
PROJ.	UNIT	SCALE	DRAWN
	MM	1:1	
CUSTOMER DRAWING		CHECKED	DWG NO: SN-M718-001
		APPROVAL	SHEET 1/1
			REVISION X1

